

COMPOSOLVE ENTERPRISES LIMITED

GENERAL CONTRACTORS

COMPANY PROFILE

1. VISION

To become a world-class Construction Company and management organization known by our customers for setting the benchmark in excellence and continuous improvement.

2. OUR MISSION

- ❖ To engineer, design and maintain enduring facilities.
- ❖ To offer innovation, cost effective and quality services to our clients
- ❖ To achieve superior financial returns for the share holders

3. OUR VALUES

- ❖ Integrity,
- ❖ Innovation
- ❖ Excellence
- ❖ Teamwork

CONTACTS:

COMPOSOLVE ENTERPRISES LIMITED
P.O BOX 1877 - 80100
ELECTRICITY HOUSE, 5TH FLOOR,
NKRUMAH ROAD,
MOMBASA.

Email: contact@expertwords.net

TABLE OF CONTENTS

- 1) Business Name and Location
 - 2) Executive Summary
 - 3) The Company
 - 3.1 Our Vision
 - 3.2 Our Mission
 - 3.3 Goals and Objectives
 - 3.4 Our Philosophy
 - 3.5 Our values
 - 3.6 Ownership
 - 4) Core Competence
 - 5) Organization Structure
 - 6) Resource Availability
 - 6.1 Technological Resource
 - 6.2 Personal Resources
 - 6.3 Financial Resource
 - 7) Financial Background
-

1. BUSINESS NAME AND LOCATION

BUSINESS NAME: COMPOSOLVE ENTERPRICES LIMITED

Location : MOMBASA
Reg No. : CRP/2010/16613
Year of Reg : 13th January, 2010
EPRA : Reg: Class C1
Postal Address : P.O. Box 1877 - 80100
email : contact@expertwords.net
Website : <http://expertwords.net>

2. EXECUTIVE SUMMARY

On **Composolve Enterprises Limited** was registered in the year 2010 with the greatest aim of offering services in Information and Communication Technology (ICT), Electrical & Solar Installations and general supplies.

The company having formulated its strength designed the following products and services, which eventually became our object of trade.

1. Electrical and Solar Energy installation works
2. Power backup sales and Services
3. ICT and Electrical consultancy
4. Cybercrime Investigations and digital forensics
5. Data recovery
6. CCTV Camera Installation and Services
7. General Supplies and services of office machines and equipment

Composolve Enterprises Limited currently boasts high-ranking corporate customers, and with its long-term vision of acquiring a greater share of the electrical installation and technology markets, it has tirelessly worked towards achieving high standards in customer service, thereby maintaining its niche in this market segment. It has been and still is our desire and commitment to offer affordable services of the highest level of performance and value. The company has survived competition attributed to unmatched quality customer service both during and after sales. We carry out extensive research and vouching procedures to ensure our clients receive good value for their hard-earned money.

Composolve Enterprises Limited partners with stores that offer genuine and high-quality materials for the market, and subsequent installations and servicing are simplified instantly.

3. THE COMPANY

Composolve Enterprises Ltd is located on the 5th floor of Mombasa Electricity House on Nkrumah Road. Our prime location provides us with additional ease in satisfying our clients' needs in terms of easy transportation and delivery of supplies and services within and beyond the city limits.

3.1 OUR VISION

To be the most desired supplier and provider of technical services in Kenya. To supply our consumers with high-value items and services at a reasonable price. We will achieve customer satisfaction by implementing superior standards in all aspects of the general supply and technology industries. Our aims and objectives will be based on the firm's success in satisfying the expectations of its customers, shareholders, employees, and strategic partners.

3.3 GOALS AND OBJECTIVES

Our goals and objectives are based on long-term mutually beneficial partnerships with our customers and strategic partners, with the clear goal of ensuring that investors receive value for their investment.

Our objectives are as follows:

- a) to strive for a fair portion of the general supply and technical services market in Kenya.
- b) to establish particularly unique methods and procedures targeted at bearing convenience in service delivery for customer satisfaction.
- c) To consistently improve and design new products and services in keeping with the rapidly changing trends in modern products and technology.
- d) To promote a positive responsibility agenda in society for the growth and development of the Kenyan people.

3.4 Our Philosophy

To equally conduct our business with an above-average reputation by developing product and service delivery based on quality and affordability, and to continuously ensure that the industry's ethical values are attained and maintained for our clients.

3.5 Our Values

- We seek to provide services with particular integrity while adhering to the industry's moral standards, as well as national and international legal and legislative requirements. It is our desire to fill the void in ensuring that our clientele systems run successfully and efficiently for growth.
 - We aspire to a higher level of excellence and professionalism in answering our clients' requests, and we hold ourselves to high standards of professional competence at all times.
 - We value our customers and regard each with equal dignity, regardless of size or affiliation.
-

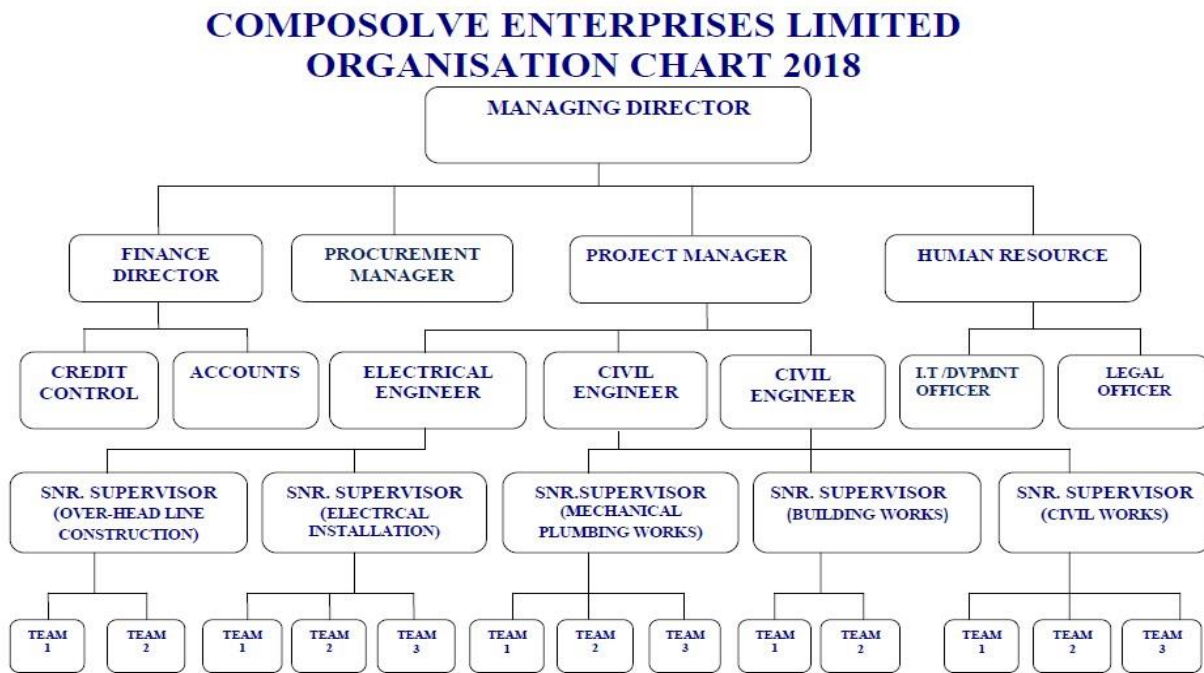
3.6 Ownership

Composolve Enterprises Ltd is a Kenyan-owned company with a 100% Kenyan staff. As a result, we are proud to be Kenyans with the knowledge and capacity to contribute to the Kenyan economy and, eventually, the broader region.

4.0 CORE COMPETENCE

- a) Reasonably priced and skillfully designed goods and services
- b) Convenient location and simple accessibility inside and its environs
- c) Warm and most attentive customer service
- d) Quick effective and efficient customer support response - our cure to system issues.
- e) Professionally qualified, competent, and motivated team
- f) Consistent clientele, upgrading induction on emerging international trends in the business.

5.0 ORGANIZATION CHART (As attached proposed)



- > Project Manager is a registered engineer
- > Our Project Engineers are responsible for 3 to 4 senior supervisors
- > Senior Supervisor is responsible for 2 to 4 teams
- > Each Team is responsible for a project with technicians of 3 to 4 groups
- > We are capable of undertaking (ten)10 projects at one time

6.0 RESOURCE AVAILABILITY

6.1 Technological Resources

Composolve Enterprises Ltd is technologically advanced and has lately acquired much required equipment and machinery to enable it to perform its functions successfully and provide excellent and satisfied outcomes to its customers.

6.2 Personnel Resources

We Composolve Enterprises Ltd have contracts with skilled and experienced employees in both its Administrative and Operational lines to assure the availability of this vital resource targeted at achieving high-quality and professional services for its customers.

6.3 Financial Resources

The company's financial situation is quite liquid, and with a larger asset base, we see a bright future of enabling and meeting the demands of not just our consumers, but also of our suppliers, employees, and shareholders. Composolve Enterprises Ltd has a solid mutually beneficial connection with its financial partners. This ensures that any project believed to be beyond the company's financial competence gets funded.

6.4 CURRENT CLIENTS AND CORPORATE PARTNERS ARE:

- ❖ Dapash's company
- ❖ Kitui County Government

7.0 SOCIAL RESPONSIBILITY AND AWARENESS

In all of our initiatives, Composolve Enterprises Limited participates and collaborates closely with the local community. We provide technical training on Responsible Behaviors, Occupational Safety and Health rules, First Aid response basics, and HIV/Aids awareness to the local casuals we employ, our staff, and the community at large

